

# SOTI<sup>®</sup>

ENTERPRISE MOBILITY MANAGEMENT

## Managing Mobility for Education

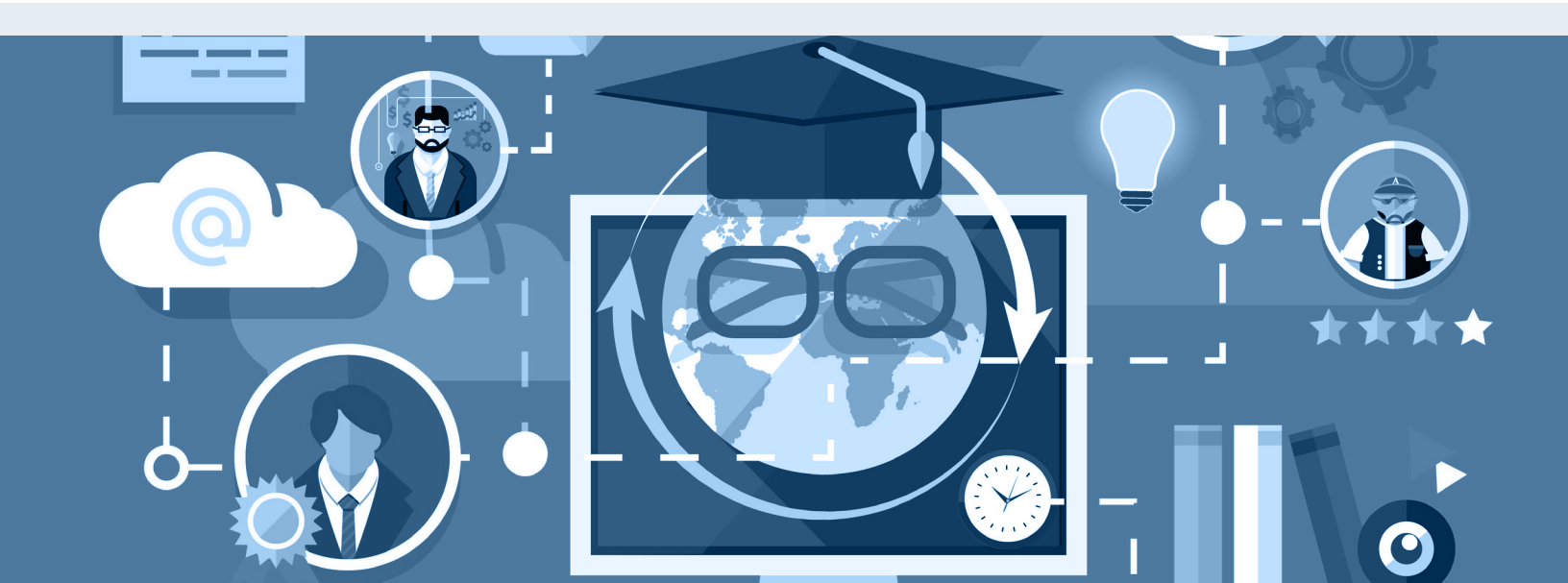
### Mobile technology is entering the classrooms at all grades and levels

Mobility can deliver amazing benefits for both student and teachers, but devices are not enough. Mobile applications and content are also a necessary component of your mobility strategy. Mobile technology in the classroom needs to be controlled; you need to manage what the student can see, and where and when they can see it. SOTI makes it easy for educators to monitor device usage and control what content is accessed. In addition, the devices can be secured and tracked so that they are not easy to lose or steal.



# Use of Mobility in Education

Advances in education theory have changed what material is taught and how it is taught, Where it is taught has stayed amazingly consistent. For years education has been focused on the classroom experience, but mobile technology is helping to break down classroom walls and let students learn wherever and whenever they want.



## Richer, more user-friendly course content

Mobile devices enable the delivery of richer content; animations and videos that are easier to comprehend, can be paused, and repeated. Kids today are very visual. They love videos, animations and pictures. In addition, course content can be 'gamified' without students ever knowing it is happening.

## Deliver one to one Education

Mobile devices provide a persistent communication channel between the student and teacher. Teachers can track lesson and quiz progress to customize curriculum for individual students based on their pace of learning.

## Level the playing field

Too often we see that students that have access to high technology at home have a leg up over students that do not. When the school includes mobile devices in their programs, everyone wins.

## Students can ask for help from home

Students use mobile device at home to review classes, practice questions and quizzes. If they need help, they can email or send a request based on teacher availability and queue a chat session to go over their homework problems.

## Foster collaboration and cooperation

Mobile devices make it easy and fun for students to work together both inside and outside the classroom. Communications and scheduling are easier and more fun, increasing the chances of success.

# Why SOTI for Education?

## Engage Students with the Right Information

In addition to traditional class notes and assignments, technology in the classroom enables rich media like videos and presentations. Educators need to control how they distribute digital content to their students. SOTI hub and Secure Content Library enable IT admin to control who sees what documents and what they are allowed to do with them. Students can access class material from anywhere, at any time. IT Administrators can maintain an audit trail of document distribution, sharing, and viewing status.

## Web without the Risk

Students have enough distractions in their lives and they do not need a new toy from school to make it worse. When students are using laptops or tablets at school, educators need to keep them focused and free of any objectionable content. SOTI Web Filtering lets teachers whitelist/blacklist websites to control what a student can see. SOTI Kiosk mode makes it possible to prevent the student from changing device settings and downloading unapproved applications.

## Real-Time Assistance Anytime, Anywhere

Mobile technology should be allowed to be mobile. Students often need to take their devices home to complete their homework. SOTI remote view and 2-way chat allow teachers to help their students with any problems no matter where they are. In addition, IT Admin can use SOTI's remote control and file sync features to fix any problems a student may have with their device.

## Keep Tabs on your Assets

Lost or stolen laptops or tablets can be costly. SOTI security mandates two factor authentication to make the device less attractive to theft. In addition, SOTI Location Services can help find lost devices, or remotely wipe and lock-down a device that is considered non retrievable.



# Bringing it All Together

Mobile technology has been piloted in K-12 education for many years. Lots of schools and school districts are trying lots of different approaches, and while it is clear that there is no silver bullet, some amazing things are possible.

*Mobile technology really does break down the walls of the classroom.*

- *Students can view/review lessons anywhere and anytime.*
- *Mobile technology also delivers real-time visibility to the teacher and parents.*
- *Access logs allow the teacher to see which students are keeping up with the work material, and practice tests and quizzes demonstrate how well they understand the material.*
- *Parents are no longer reliant on sporadic test scores and quarterly report cards to see how their kids are doing. Parents and teachers can work together to make sure that students do not get too far behind.*

*When all of the pieces are in place, amazing things can happen; students are more engaged, parents are informed and happy and teachers feel more effective.*

SOTI can help you with all of your mobility management requirements; devices, applications, content and security. We are eager to help you break down the walls of the classroom and teach your students like they have never been taught before.

#### Additional Resources

For more information about SOTI MobiControl, please download our [Brochure - SOTI - Taking Mobility to Endless Possibilities](#).

For more information about Mobile Security, please download our [Whitepaper - Mobile Security - Addressing the Evolving Threat Landscape](#).

Choose SOTI for all your education mobility management needs.

**SOTI is a proven product innovator and EMM Industry leader. Over 16,000 customers across 170 countries rely on SOTI for their EMM needs. We empower the enterprise to take mobility to endless possibilities.**

**SOTI.net**

Copyright 2016© SOTI Inc.

**SOTI**